

Human GPC3/Glypican 3 Protein

Cat. No. GPC-HM131

Description

| | |
|-------------------------|---|
| Source | Recombinant Human GPC3/Glypican 3 Protein is expressed from HEK293 with His tag at the C-Terminus. It contains Gln25-His559. |
| Accession | P51654-1 |
| Molecular Weight | The protein has a predicted MW of 61.6 kDa. Due to furin-like convertase cleavage site and glycosylation, the protein migrates to 42 kDa, 70-115 kDa based on Bis-Tris PAGE result. |
| Endotoxin | Less than 1EU per μg by the LAL method. |
| Purity | > 95% as determined by Bis-Tris PAGE > 95% as determined by HPLC |

Formulation and Storage

| | |
|-----------------------|---|
| Formulation | Lyophilized from 0.22 μm filtered solution in PBS (pH 7.4). Normally 8% trehalose is added as protectant before lyophilization. |
| Reconstitution | Centrifuge the tube before opening. Reconstituting to a concentration more than 100 $\mu\text{g}/\text{ml}$ is recommended. Dissolve the lyophilized protein in distilled water. |
| Storage | -20 to -80°C for 24 months as supplied from date of receipt. -80°C for 3 months after reconstitution. Recommend to aliquot the protein into smaller quantities for optimal storage. Please minimize freeze-thaw cycles. |

Background

Glypican-3 is a protein, which is encoded by the GPC3 gene in humans. The protein core of GPC3 consists of two subunits, where the N-terminal subunit has a size of ~40 kDa and the C-terminal subunit is ~30 kDa. Glypican 3 is a potential therapeutic target for treating liver cancer and other cancers. Several therapeutic anti-GPC3 antibodies have been developed.

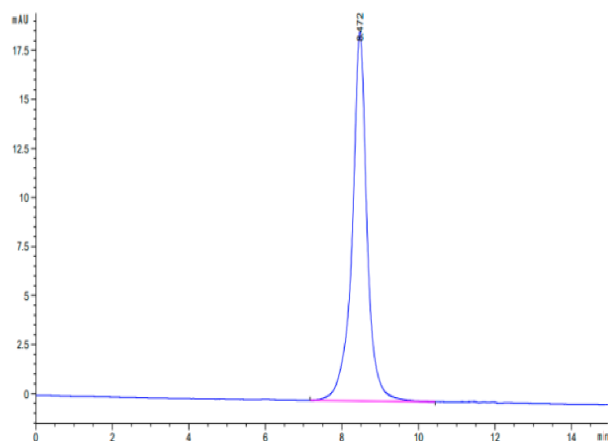
Assay Data

Bis-Tris PAGE



Human GPC3 on Bis-Tris PAGE under reduced condition. The purity is greater than 90%.

SEC-HPLC



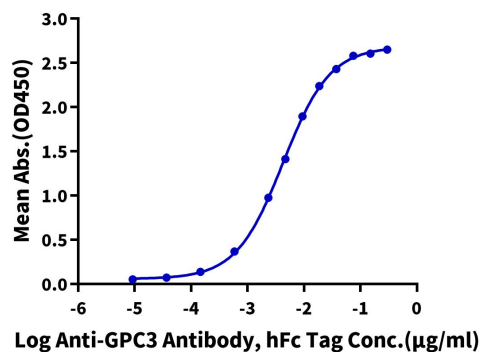
The purity of Human GPC3 is greater than 95% as determined by SEC-HPLC.

Assay Data

ELISA Data

Human GPC3, His Tag ELISA

0.1µg Human GPC3, His Tag Per Well



Immobilized Human GPC3, His Tag at 1 µg/ml (100µl/Well). Dose response curve for Anti-GPC3 Antibody, hFc Tag with the EC50 of 4.3ng/ml determined by ELISA (QC Test).